

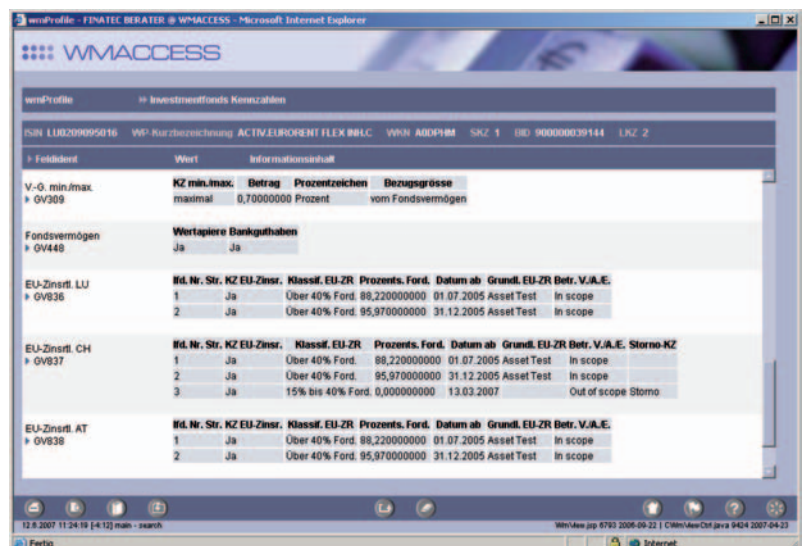
WMACCESS

WM DATA INHOUSE

THE COMPLETE SOLUTION FOR SECURITIES NOTIFICATIONS DATA

Do you already have a WM Data service licence and receive updates daily? If so, WMACCESS can also be used as an in-house solution.

With the Inhouse solution, the entire WMACCESS product suite, comprising the database and the import program plus the graphic user interface, is installed in the customer's data centre. Upon request, the application can also be hosted in the data centre of CPB SOFTWARE (GERMANY) GMBH.



EXTENDED RANGE OF FUNCTIONS

For licensing reasons, the Internet solution from WMAccess only contains a fraction of the functions and modules that are provided with the Inhouse solution.

The extended range of functions of the Inhouse solution includes:

- Download function of every hit list and detail view in Microsoft Excel
- Unlimited number of inquiries – without transaction costs, as with the Internet solution
- Random creation and customisation of inquiry and display options without any need for programming Search screens, hit lists and detail screens can be individually composed
- Search in all WM Fields including link fields
- Portfolio-related import monitoring with display of the field identifications supplied
- Automatic import of portfolio and/or monitoring classes from any number of operative systems
- Direct SQL accesses to the relational database
- Facility for developing your own interfaces - quickly and easily thanks to the structure..

PROVISION TERTIARY SYSTEMS

It is possible to use the interface data conversion component (IDC) to supply tertiary systems with (processed) WM Data. IDC is a user-definable and parameterisable WM Data interface to operative systems. If a tertiary system requires information that is not supplied in a WM Field, IDC also provides a user-friendly and simple-to-administer mapping tool and set of rules. By way of example, the IDC export utility generates interface files in any structure in XML format or in the form of simple text files (e.g. separated by semicolons)..

DATA SEGMENTS

- Class master data (classifications, identifier financial innovation, etc.)
- Issuer master data
- Corporate actions
 - Dividends, interest payments, investment payouts incl. all tax-related details on profits (in cash and retained) in addition to other payouts
 - Capital measures (subscription right, splits)
 - Administration (annual general meetings, mergers, shareholdings, oppositions)
 - Deadlines (subscription or conversion rights, maturities, redemption bonds).
- Investment and risk management (group integrations, risk weightings, circulating shares, etc.)
- Trading practices per instrument and securities trading centre for controlled straight-through processing
- Investment fund prices and intercompany profits (with historical data from 01.01.1994) in addition to other key figures on the EU interest directive for Germany, Luxembourg, Switzerland and Austria
- Investment fund indices (fund characteristics, main investment objectives, conformity with directives, issuing premiums, management fees, total expense ratio, etc.)
- Calculated bond prices
- Derivatives (options & futures)

<http://www.wmaccess.com>

>>>WMAccess
perform intelligent and simple searches -
find quickly and decide!



CPB SOFTWARE AG

CPB SOFTWARE (GERMANY) GMBH

Im Bruch 3, 63897 Miltenberg/Main, Germany
Phone: +49 (9371) 9786 -74, Fax: -68
germany@cpb-software.com
www.cpb-software.de